



Dry/Hay
Fodder



Paper/M
Waste



PET
Waste



Metal
Waste



Double Action Manual Door

ARS-005

BALE SIZE	16"x12"x 6-10"(HXWXL)
BALE WEIGHT	30-50 KG (in MS) "
ELECTRIC MOTOR	15 H.P
OPERATION	Manual
MACHINE WEIGHT	3.5 Tons
BALEABLE MATERIAL	Ferrous & Non Ferrous

Note - ** Production capacity with Automation and Depending on density of in-feed material.



Double Action Auto Door

ARS-006

BALE SIZE	12"x24"x6-10 (HXWXV)
BALE WEIGHT	"15-25Kgs (IN AL) 60Kgs (IN MS)"
ELECTRIC MOTOR	30H.P
OPERATION	Manual/Automatic
MACHINE WEIGHT	5.5 Tons (Approx)
BALEABLE MATERIAL	MS / Aluminium

Note - ** Production capacity with Automation and Depending on density of in-feed material.



Triple Action Baler

Ferrous & Non Ferrous Scrap



TECHNICAL SPECIFICATIONS OF DIFFERENT TRIPLE COMPRESSION MACHINE MODELS (STD).

MODEL	10"x10"	12"x12"	14"x14"	15"x15"	20" x 20"
BALING CHAMBER	20"x30"x50"(HxWxL)	24"x30"x57"(HxWxL)	30"x38"x74"(HxWxL)	30"x38"x74"(HxWxL)	40"x48"x84"(HXWXL)
BALE SIZE	10"x10"x8-12"(HXWXL)	12"x12"x5-8"(HXWXL)	14"(H)x14"(L)xW-V	15"(H)x15"(L)x(W)-V	20"x20"x10-20"(HXWXL)
BALE WEIGHT	20-25 KGS (IN AL) 50-60 KGS (IN MS)	20-30KGS (IN AL) 50-80KGS (IN MS)	55-85 KGS (IN MS)	30-45KGS (IN AL) 100-120KGS (IN MS)	250 – 350 KGS (STEEL SCRAP)
ELECTRIC MOTOR	30 H.P	30 H.P	40 H.P	40 H.P	2 X 40 H.P
MACHINE WEIGHT	6.5 TO 7 TONS	8.5 TONS	11.5 -12.5 TONS	12-13 TONS	22-23 TONS
OPERATION	Manual/Automatic	Manual/Automatic	Manual/Automatic	Manual/Automatic	Manual/Automatic

Note - ** Production capacity with Automation and Depending on density of in-feed material.

**We Also Provide Special Balers (8"x8", 9"x9", 10"x 10",12"x12", 13"x13",14"x 14", 18"x 18", 20"x20" & 24"x24")
Special Models with Additional Features**



Hydraulics Nibbler Machine

(To remove Iron content from Aluminium attachments)

FUNCTION	HYDRAULIC
BLADE SHAPE	"V"
NUMBER OF STROKE	14-16 MINUTES
ELECTRIC MOTOR	15 H.P
OPERATION	Automatic
BLADE OPENING	4"



Alligator Shear Machine



MODEL	(ARS-500)
CUTTING FORCE	2000 Kn (LEAVERAGED)
LENGTH OF BLADE BLOCK	600 MM + 150 MM
BLADE OPENING	85 - 200 MM
PRE COMPRESSION	JAW 150 MM SERRATED
CUTTING SIZE	Φ 50 MM
NUMBER OF STROKE	13 - 14 / MINUTE
ELECTRIC MOTOR	15 H.P.
WEIGHT OF MACHINE	3 - 3.5 TON (APPROX)



Vertical Baling Machine

(Single Cylinder)

(Double Cylinder)



MODEL	VSC
BALE SIZE	24" x 36" x V"
BALE WEIGHT	40 - 80 Kgs (IN OCC)
ELECTRIC MOTOR	10 H.P 1440 R.P.M.
OPERATION	Manual/Automatic
MACHINE WEIGHT	3 Tons approx
BALEABLE MATERIAL	MSW, PAPER, PLASTIC, FABRIC

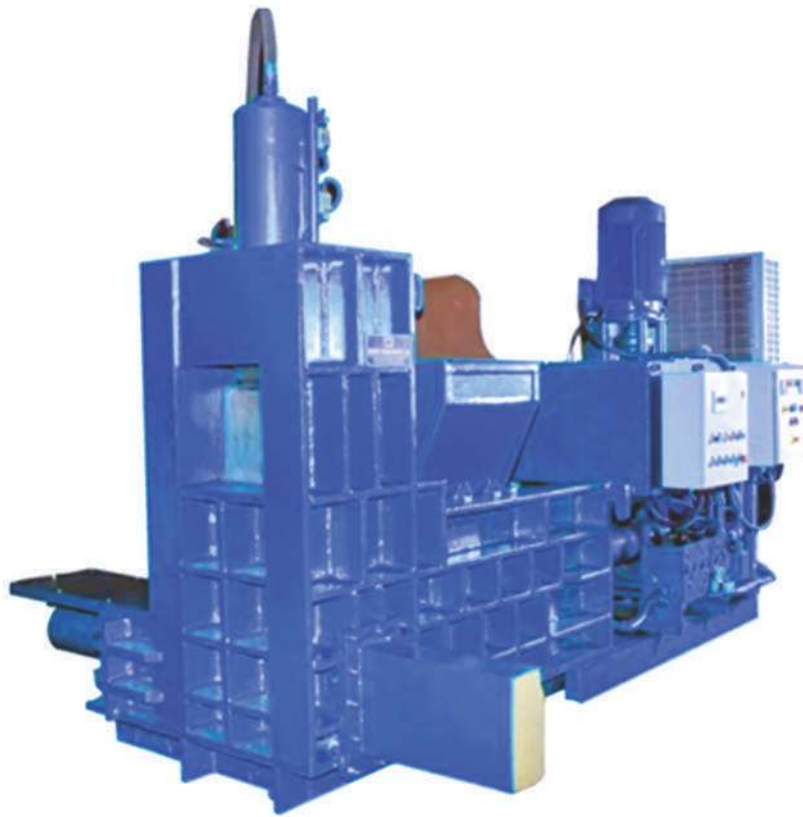
Note - ** Production capacity with Automation and Depending on density of in-feed material.

MODEL	VDC
BALE SIZE	30" x 48" x V"
BALE WEIGHT	100 - 250 Kgs (IN OCC)
ELECTRIC MOTOR	30 H.P 1440 R.P.M.
OPERATION	Manual/Automatic
MACHINE WEIGHT	5.5 TONS Approx
BALEABLE MATERIAL	MSW, PAPER, PLASTIC, FABRIC

Note - ** Production capacity with Automation and Depending on density of in-feed material.



Complete Feed / Dry Fodder Baling Machine

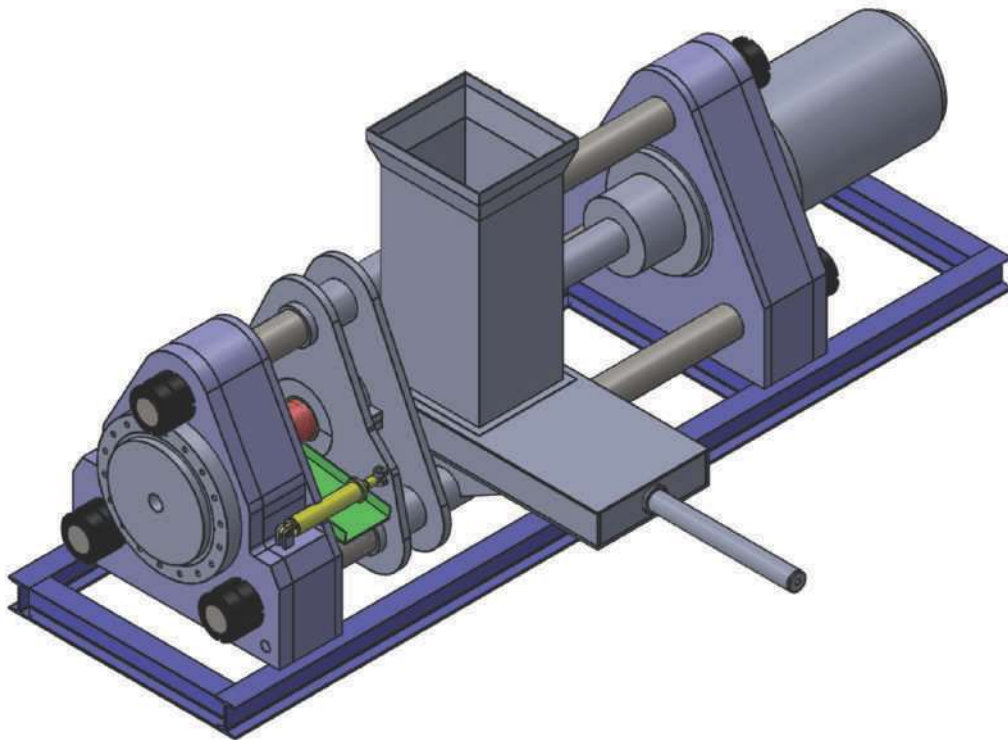


BALE SIZE	12" x 16" x 5"	12" x 24" x 6"	12" x 30" x 6"	12" x 16" x 28"
BALE WEIGHT	10 - 12 Kgs Approx	13 - 15 Kgs Approx	16 - 20 Kgs Approx	25 - 40 Kgs Approx
ELECTRIC MOTOR	25 H.P 1440 R.P.M.	30 H.P 1440 R.P.M.	40 H.P 1440 R.P.M.	25 H.P 1440 R.P.M.
PRODUCTION / HOUR	90 - 110 Approx**	80-110 Approx**	80-110 Approx**	80-110 Approx**
OPERATION	Manual/Automatic	Manual/Automatic	Manual/Automatic	Manual/Automatic
MACHINE WEIGHT	6.5 TONS Approx	8 TONS Approx	8.5 TONS Approx	4 - 5 TONS Approx

Note - ** Production capacity with Automation and Depending on density of in-feed material



Briquetting Machine



BRIQUETTE SIZE	3" DIA	4" DIA
LENGTH OF BRIQUETTE	1.5" - 3" DIA	2" - 4" DIA
WEIGHT OF BRIQUETTE	1 Kg - 1.2 Kg (IN IRON)	2.5 Kg - 3 Kg (IN IRON)
ELECTRIC MOTOR	30 H.P.	50 H.P.
PRODUCTION / HOUR	200 - 300 Nos / HR	200 - 300 Nos / HR
OPERATION	MANUAL / AUTOMATIC	MANUAL / AUTOMATIC
MACHINE WEIGHT	9 - 10 TONS APPROX	10 - 11 TONS APPROX

**Note - ** Production capacity with Automation and
Depending on density of in-feed material**



NEW MEGA SERIES

Especially For Processing Mixed Scrap without Sorting



Mega Series

Alligator Shear Machine



MODEL	(ARS-1000)
CUTTING FORCE	2000 Kn (LEAVERAGED)
LENGTH OF BLADE BLOCK	900 MM + 150 MM
BLADE OPENING	85 - 300 MM
PRE COMPRESSION	JAW 150 MM SERRATED
CUTTING SIZE	Φ 85 MM
NUMBER OF STROKE	13 - 14 / MINUTE
ELECTRIC MOTOR	40 H.P.
WEIGHT OF MACHINE	7.5 - 8 TON (APPROX)

Note - ** Production capacity with Automation and Depending on density of in-feed material



Mega Series

Horizontal Scrap Shear



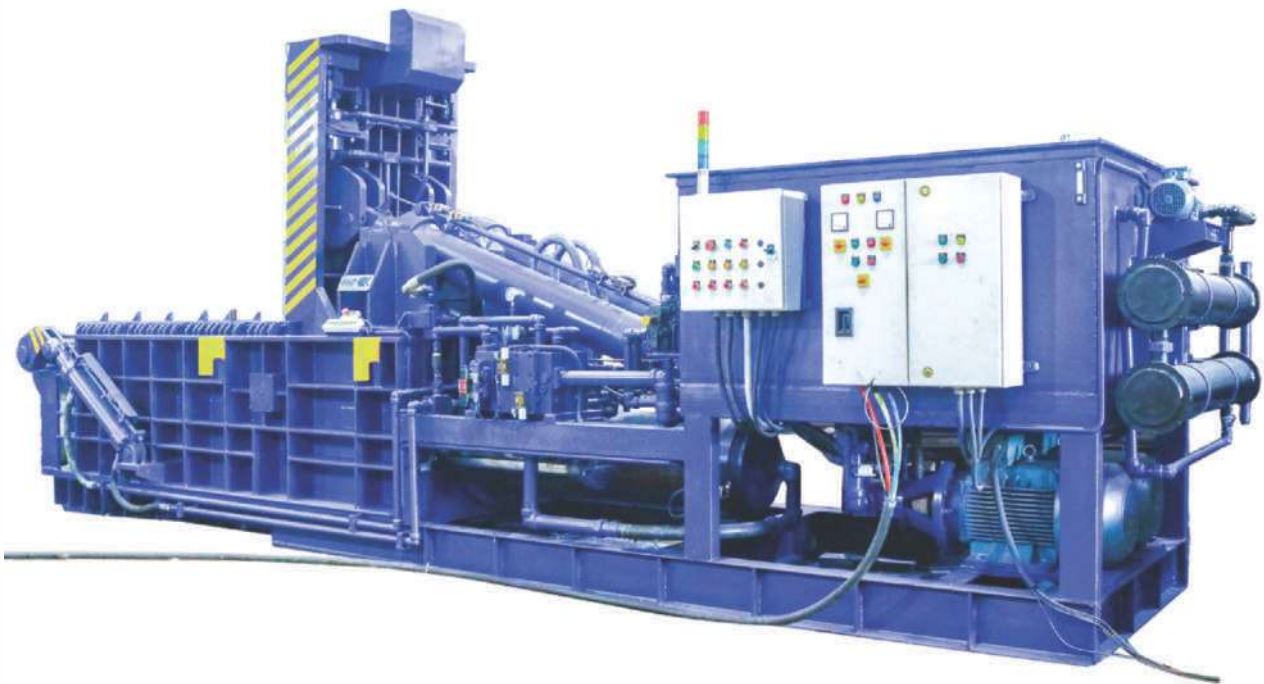
MODEL	(ARS-HSS400)	(ARS-HSS600)
SHEAR CYLINDER NOMINAL FORCE	200 TON X 2	300 TON X 2
PRESS CYLINDER NOMINAL FORCE	120 TON	190 TON
CHAMBER SIZE	2200 (L) X 1400 (W) X 2250 (H) (MM)	2200 (L) X 1400 (W) X 2250 (H) (MM)
FEEDING SIZE	3400 (L) X 2500 (W) X 3200 (H) (MM)	3750 (L) X 2500 (W) X 3200 (H) (MM)
ELECTRIC MOTOR	75 H.P. X 2	100 H.P. X 2
COOLING SYSTEM	WATER COOLED HEAT EXCHANGER X 3	WATER COOLED HEAT EXCHANGER X 3
CONTROL	MANUAL / AUTOMATIC	MANUAL / AUTOMATIC
PRODUCTION	4-7 TONS / HOUR**	7-10 TONS / HOUR**

Note - ** Production capacity with Automation
and Depending on density of in-feed material



Mega Series

Double Compression Baler



BALE SIZE	20"x48" x VARIABLE(HxWxL)
BALE WEIGHT	300 - 350 Kg (Steel Scrap)
ELECTRIC MOTOR	2 x 50 H.P
OPERATION	Manual/Automatic
MACHINE WEIGHT	24 - 25 Tons (Approx)
BALEABLE MATERIAL	Ferrous & Non Ferrous

Note - ** Production capacity with Automation and Depending on density of in-feed material



Mega Series

Triple Compression Baler



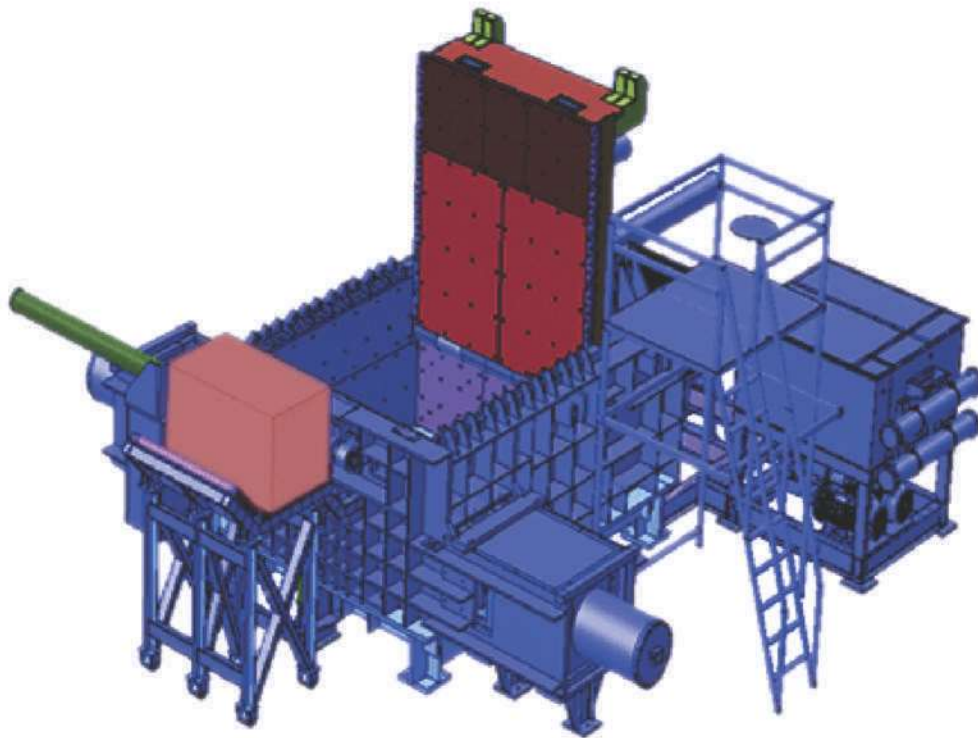
BALE SIZE	35"x35"(HXW)
BALE WEIGHT	800kg - 1200 kg
ELECTRIC MOTOR	2 x 50 H.P
OPERATION	MANUAL / AUTOMATIC
MACHINE WEIGHT	53-55 TONS (APPROX)
BALEABLE MATERIAL	FERROUS & NON FERROUS
OPTIONAL	HOPPER (ON DEMAND)

Note - ** Production capacity with Automation and Depending on density of in-feed material



Mega Series

Four Side Compression Baler

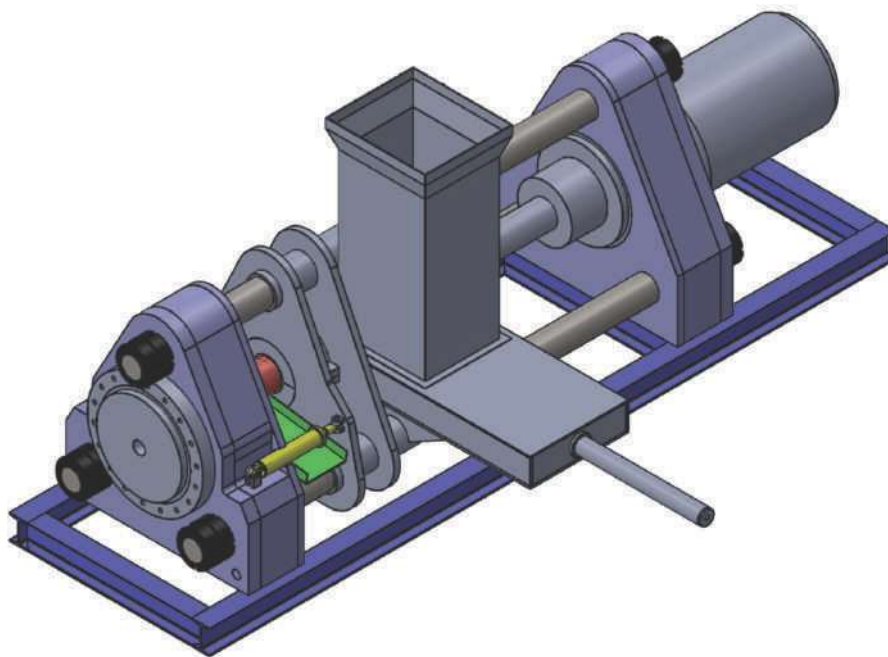


BALE SIZE	35" x 35"x 30 - 50 (HXWXL)
BALE WEIGHT	1000kg - 1600 kg
ELECTRIC MOTOR	2 x 75 H.P
OPERATION	BY CONTROL DESK WITH PLC CONTROL
MACHINE WEIGHT	85 - 95 TONS (APPROX)
BALEABLE MATERIAL	FERROUS & NON FERROUS

Note - ** Production capacity with Automation
and Depending on density of in-feed material



Mega Series Briquetting Machine



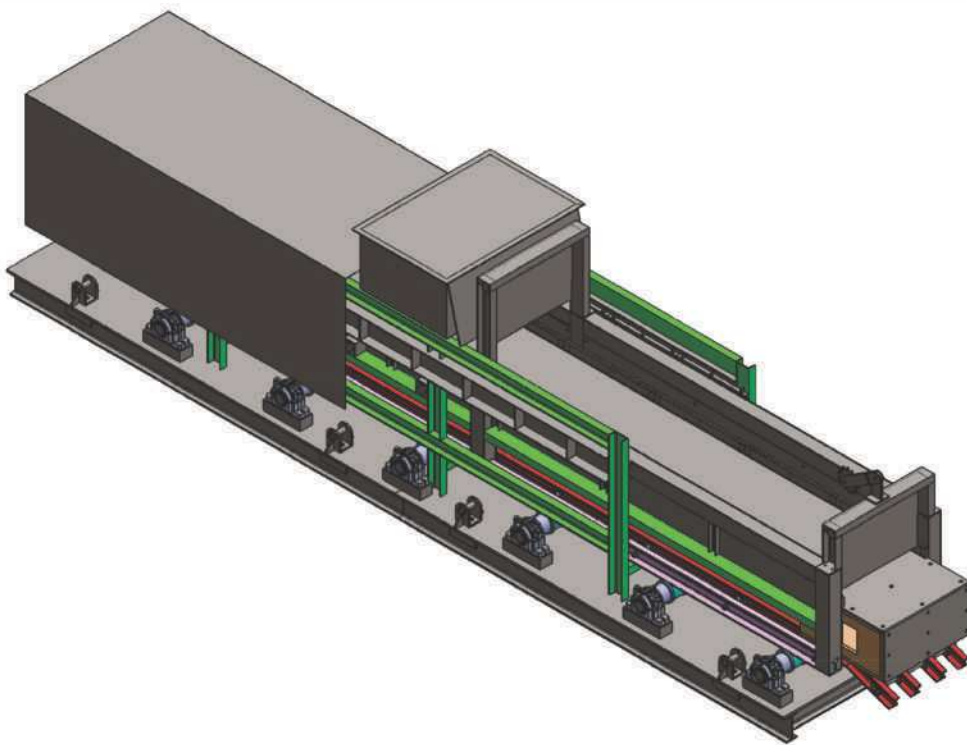
BRIQUETTE SIZE	220 MM DIA
LENGTH OF BRIQUETTE	220 MM DIA - 300 MM DIA
WEIGHT OF BRIQUETTE	30 Kg - 35 Kg (IN IRON)
ELECTRIC MOTOR	100 X 3 = 300 H.P.
PRODUCTION / HOUR	3 - 4 NOS / MIN
OPERATION	MANUAL / AUTOMATIC
MACHINE WEIGHT	50 - 55 TONS APPROX

Note - ** Production capacity with Automation and
Depending on density of in-feed material



Mega Series

Furnace Bale Pusher



BALE SIZE	1 M X 1 M X L (VARIABLE) MAXIMUM
BALE WEIGHT	1 TON APPROX
ELECTRIC MOTOR	15 H.P. 1440 R.P.M.
OPERATION	REMOTE RADIO CONTROLLED
FEEDER BOX MOVEMENT	4.5 METER TO THE CRUCIBLE MOUTH & BACK FOR POURING OF THE MELT
FEEDER OPEN LENGTH	15 METER



Mega Series

Stationary Cranes & Grabs



MODEL	2.5 TON @ 12 MTR	1.5 TON @ 8 MTR
MAX. WORKING RADIUS	12 MTR	8 MTR
MIN. WORKING RADIUS	2.5 MTR	2 MTR
CRANE DEAD WEIGHT	7.5 TON	4.2 TON
GRAB DEAD WEIGHT	900 KG	900 KG
GRAB VOLUME	0.5 M ³	0.5 M ³
SLEWING SPEED	2 - 3 R/MIN	2 R/MIN



Mega Series

Horizontal Baler

(for Hay / PET / OCC / RDF / MSW / De-Watering)



BALE SIZE	35" x 29" x V"	44" x 42" x V"
BALE WEIGHT	400 - 500 Kgs Approx	800 - 1000 Kgs Approx
ELECTRIC MOTOR	40 H.P 1440 R.P.M.	50 H.P 1440 R.P.M.
– CLAMPING SYSTEM	7.5 H.P	7.5 H.P
– TYING SYSTEM	0.5 H.P.	0.5 H.P.
OPERATION	Manual / Automatic	Fully Automatic with Auto - Tie
PRODUCTION	4 - 6 Tons / Hours	8 - 12 Tons / Hours
MACHINE WEIGHT	15 - 16 Tons Approx	17- 18 Tons Approx

Note - ** Production capacity with Automation and Depending on density of in-feed material

